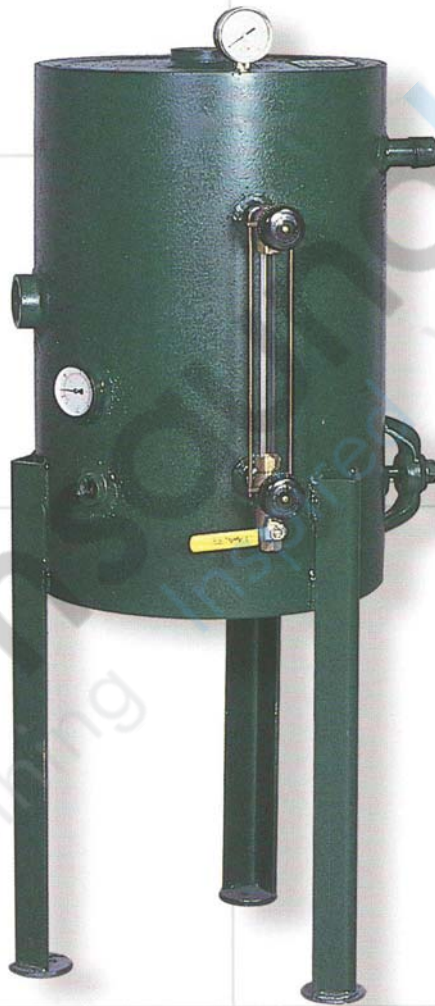


STEAMIST®

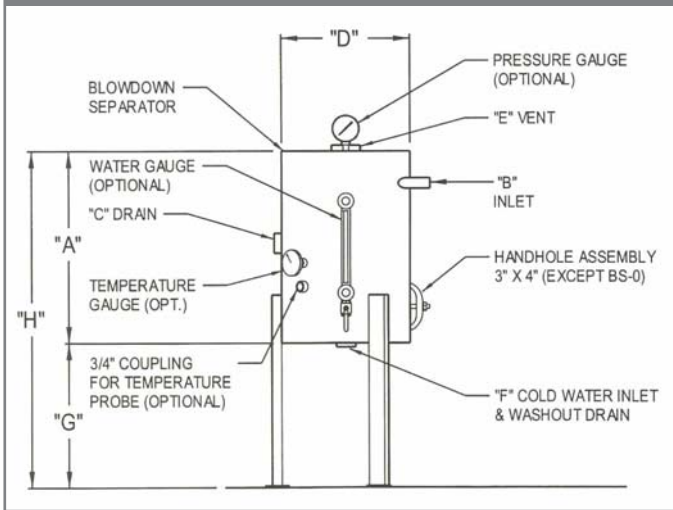
ASME Code Blowdown Tank

Model: 68007

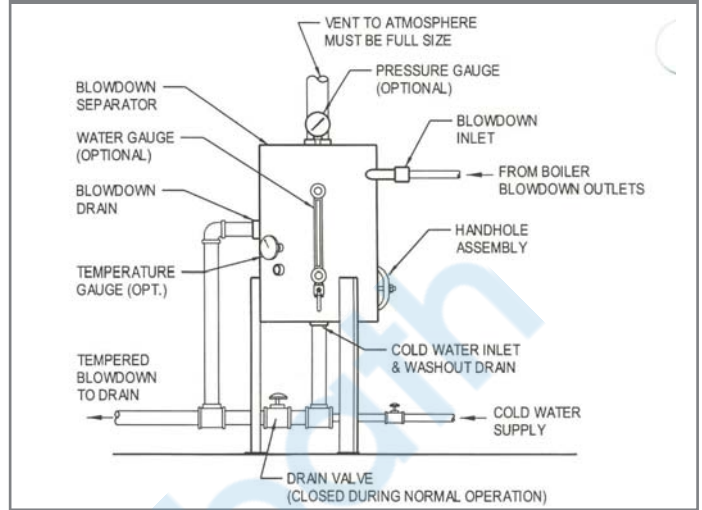


Permits draining of hot boiler water into the tank for cooling before it is dumped into drainage system. Allows HC blow-down system to comply with codes that prohibit the discharge of water exceeding 140°F.

DIMENSIONS AND FEATURES



SUGGESTED HOOK-UP TO BOILER



Specifications Chart

Model	Boiler HP (MAX)	Dimensions								Shipping Weight
		A	B	C	D	E	F	G	H	
68007	15	18"	1"	2"	12"	2-1/2"	2"	14"	32"	125

The Steamist separator design incorporates a water seal at the outlet which permits the operator to introduce cold water from the bottom to mix with the hot water and boiler steam blowdown in the separator. This reduces the outlet temperature to a level that makes it safe to discharge.

If the separator is less than half full of water after the boiler is blown down, cold tap water must be added to bring the water level to the halfway mark before the next blowdown.

*Maximum boiler working pressure: 250 psi
Maximum blowdown separator pressure: 65 psi*

Blowdown Separators are sized in accordance with National Board Standards.