

# **Installation Manual Lux Aroma System System**

**15-LUXAROMA**

**THERMASOL®**

Sauna & Steam

**Lux Aromatherapy System Install Guide**

---

# 1 Important Information Before You Install

PLEASE REVIEW WARNINGS BELOW AND LEAVE THIS MANUAL AT LOCATION.

CLIENTS SHOULD NOT USE THIS PRODUCT UNLESS YOU HAVE CONSULTED WITH YOUR DOCTOR AND RECEIVED WRITTEN PERMISSION TO DO SO.

DO NOT USE THERMASOL AROMATHERAPY OILS, SKIN CARE PRODUCTS OR ANY PRODUCT ASSOCIATED WITH YOUR THERMASCENT SYSTEM WITHOUT CONSULTING WITH YOUR ALLERGIST OR DOCTOR BEFORE USE. THESE PRODUCTS MAY BE HAZARDOUS TO YOUR HEALTH.

ALL PRODUCTS MUST BE INSTALLED IN ACCORDANCE WITH INSTALLATION INSTRUCTIONS PROVIDED. FAILURE TO DO SO MAY INVALIDATE WARRANTY AT MANUFACTURER'S DISCRETION. ©2017 THERMASOL.

REVIEW MSDS INFORMATION LOCATED ON THE FRAGRANCE CARTRIDGES PRIOR TO USE.

WHEN MOVING THERMASCENT SYSTEM REMOVE FRAGRANCE CARTRIDGES PRIOR TO MOVING TO AVOID SPILLING

# 2 Tools and Materials

## Parts Included:

- ☐ Lux Armoa System
- ☐ Lux Aroma mounting bracket/hardware
- ☐ Power Supply
- ☐ 100' rolls of tubing
- ☐ In room dispensing assembly
- ☐ Tee Fittings
- ☐ Silicone
- ☐ installation/operation instructions
- ☐ 6' Extension cord

## Materials needed:

- ☐ Drill
- ☐ 1/4" Drill Bit
- ☐ #2 Phillips head Screwdriver
- ☐ #2 Phillips head Drill Bit
- ☐ 1" Tile hole saw
- ☐ Small Flat head Screwdriver
- ☐ Level
- ☐ Sharpie Marker fine tip or pencil
- ☐ 5/16 Concrete Drill bit (if needed)

## Contact Information:

If any point before or during installation you may have a question please feel free to contact us at the following:

## Technical Support

1-877-222-9129 option # 2

---

## 3 **Selecting a proper installation Location for the Lux Aroma Unit**

The ThermaScent units should be located in a utility closet close to the steam room, most likely the same area that the steam generator is installed.

- **The Lux Aroma unit must be installed below the in shower scent head, this will allow any fragrance vapor left behind in the tube to return back to the fragrance cartridge.**
- **The Maximum install distance (Cartridge to shower scent head) is 50 feet.**

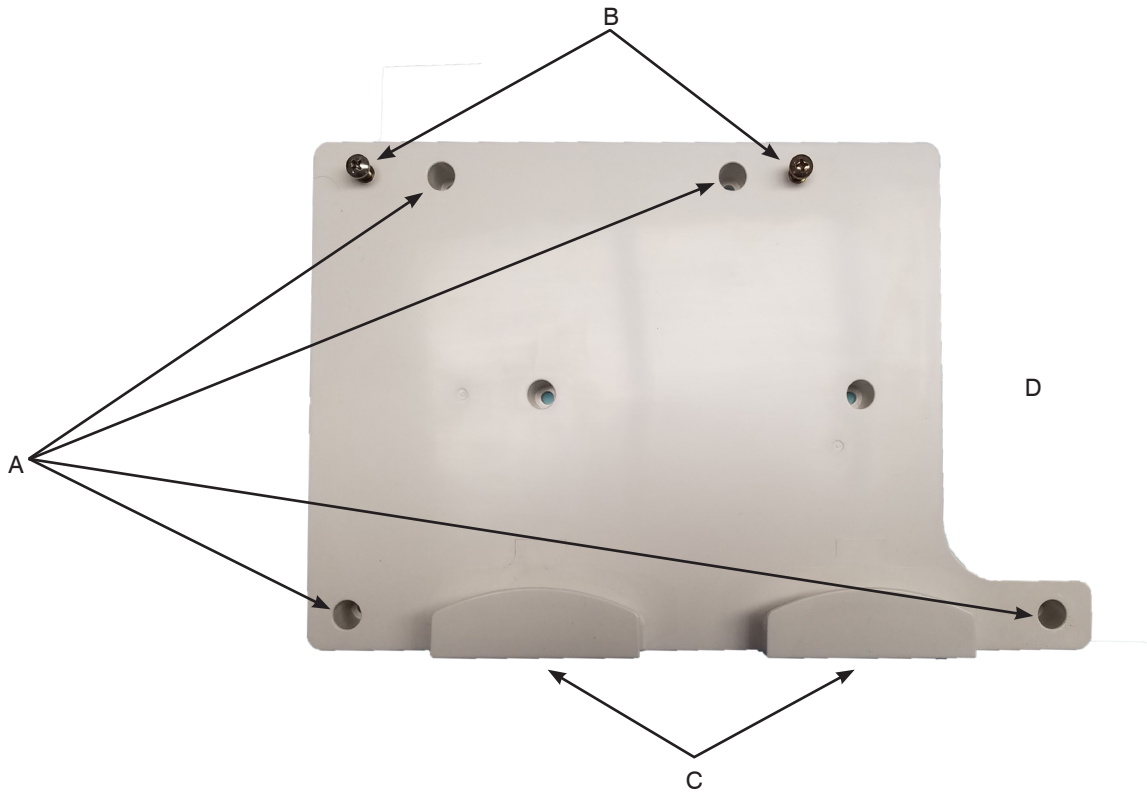
## 4 **Electrical Requirements**

A standard NEMA 5-15 duplex outlet is required to power the Lux Aroma system. Refer to the Lux Aroma mounting template for locating the outlet.

# 5 Mounting Bracket

In the materials sent, you will find the mounting bracket as seen in the picture below. On this mounting bracket there are important details listed below.

- A. 4 mounting holes (only the 4 outside mounting holes will be used for the installation)
- B. 2 Lux Aroma System anchor screws
- C. 2 Lux Aroma System support seats
- D. 1 Electrical plug location (if used directly over an electrical plug see ThermaScent mounting bracket)



Tape the included Lux Aroma System mounting template to the desired installation location (within 50' of the shower scent head), use a level along the bracket outline on the template to ensure your ThermaScent will be level once installed. Using a pen or marker puncture and mark the four mounting hole locations (shown above). If mounting to drywall use the supplied drywall anchors and screw to attached the bracket to the wall. If mounting to wood or concrete use an appropriate anchor and screw combination (not supplied).

## 6 Installing the power cord

On the back of your Lux Aroma system you will find a recessed panel as seen below in image E. Locate the power supply as shown in image F. The end of the power supply will need to be plugged into the power within the recessed panel as shown in image G.

**Make sure the power switch is off, plug the power supply into the wall, we will power up the system at the end of the installation.**

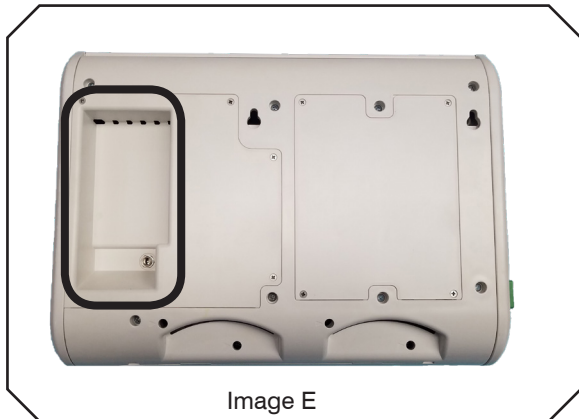


Image E



Image F



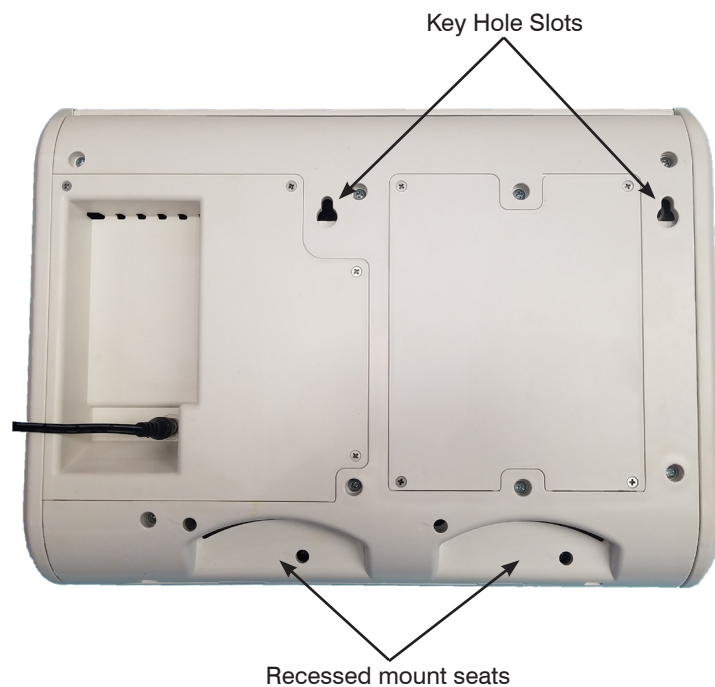
Image G



# 7 Mounting the Lux Aroma system to the bracket

With the power cord attached take the Lux Aroma system and place the two keyhole slots onto the mounting bracket. Once the screws are in the keyhole slots make sure the two recessed mount seats sit on the two support seats that are located on the mounting bracket. Use the below image as a reference.

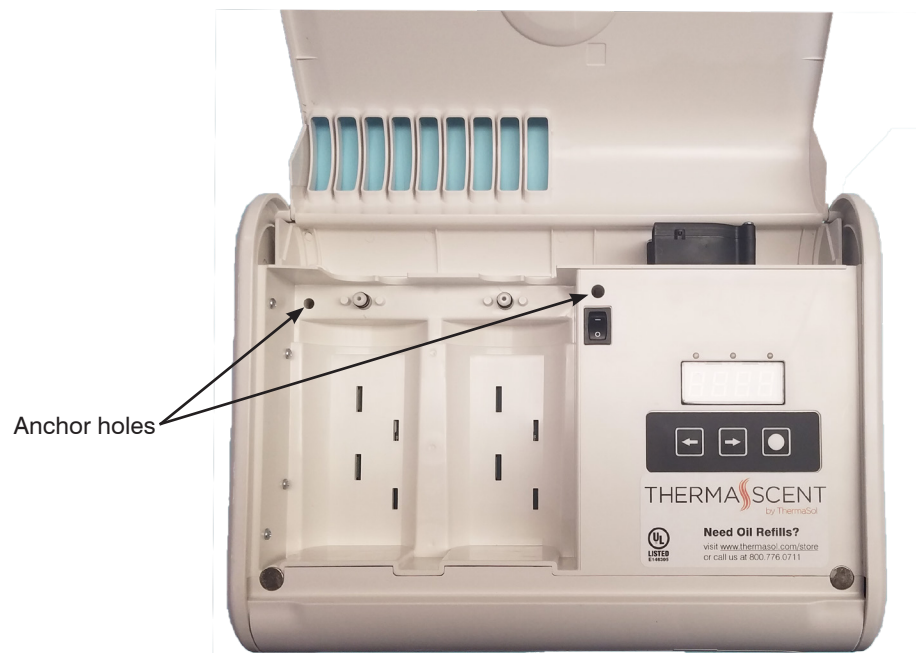
- **Make sure the power cord is not pinched between the ThermaScent and the wall mount**



## 8 Securing the Lux Aroma System to the mounting bracket

Once the Lux Aroma is sitting on the mounting bracket safely, you will need to anchor the system down securely. To do this open the front door of the Lux Aroma system.

There are two holes that allow you to insert a Phillips head screwdriver to tighten down the anchor screws. The locations are shown in the below image. Carefully insert the screwdriver into the holes the driver will be traveling through the plenum of the Lux Aroma system. Once the screw heads are found tighten until the machine is secure.

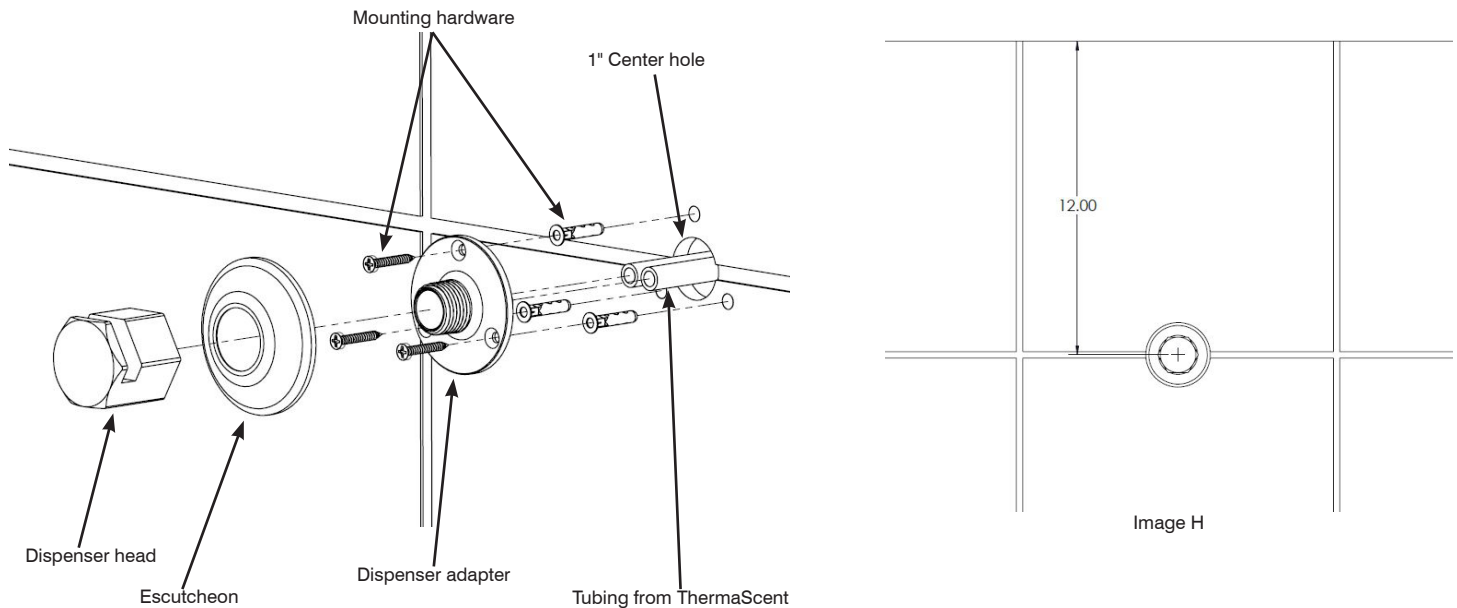




## 9 Room dispenser Preparations

Ensure that your installation location is within 50' of the Lux Aroma system and is installed above the Lux Aroma's location. This will ensure that any fragrance left over can drain back down to the cartridges.

When selecting a location for the room dispenser(s) make sure it is 12" down from the ceiling, away from the seating and high traffic areas of the steam room. See image H below. Use a drill and 1" tile hole saw, drill the center hole for the fragrance dispenser.

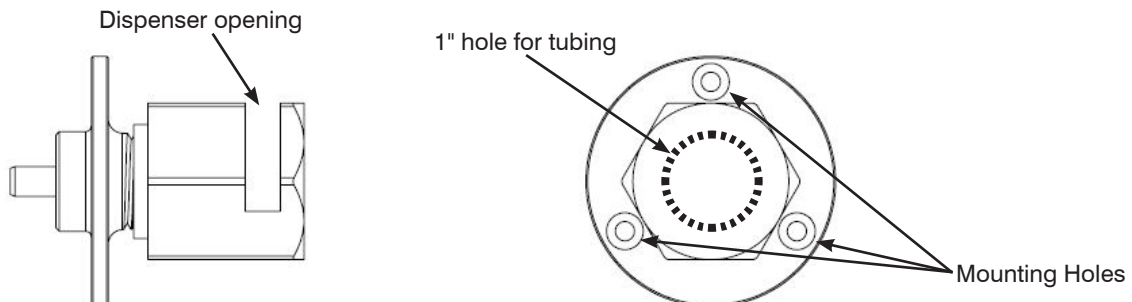


## 10 Dispenser clocking and template

Tighten the dispenser head to the dispenser adapter, hand tight is adequate. Note that the opening at the end of the dispenser head must face up use the below image as a guide. Place the assembly into the 1" hole against the wall, making sure the opening is facing up, using a marker or pen mark the three mounting holes on the wall along the outer rim of the dispenser. The holes may not be exactly clocked as shown below due to variations in the threads of the two parts. **Mark the adapter next to one of the holes so that you can align the assembly with the correct hole when the final install is preformed later.**

Drill the three marked locations with a 1/4" drill bit.

You can unscrew the head from the adapter now, the final mounting of the dispenser will be done later in the instruction.



# 11 Prepping Cartridges for installation

With your shipment you will find a pair of fragrance cartridges, as seen in image I below.

Please remove the protective wrapper and place the cartridge in the upright position. While in the upright position remove the two black rubber shipment plugs shown in image J below.

- **Make sure the Cartridges remain in the upright position, fragrance will leak from the cartridge if not upright.**



Image I

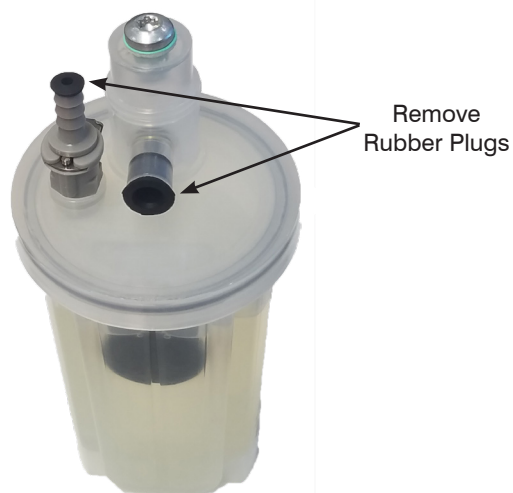


Image J

# 12 Installing the fragrance cartridges

Now that the Lux Aroma is installed securely on the wall and we have the fragrance cartridges prepped for installation, they can now be installed into place. Locate the two air fittings within the oil chambers, shown in image K below.

On the neck of the cartridge you will find a collar at a 90 degree angle from the cartridge insert that into the air fittings and press firmly, the cartridge will lock into place. Do this with both supplied cartridges. See image L.

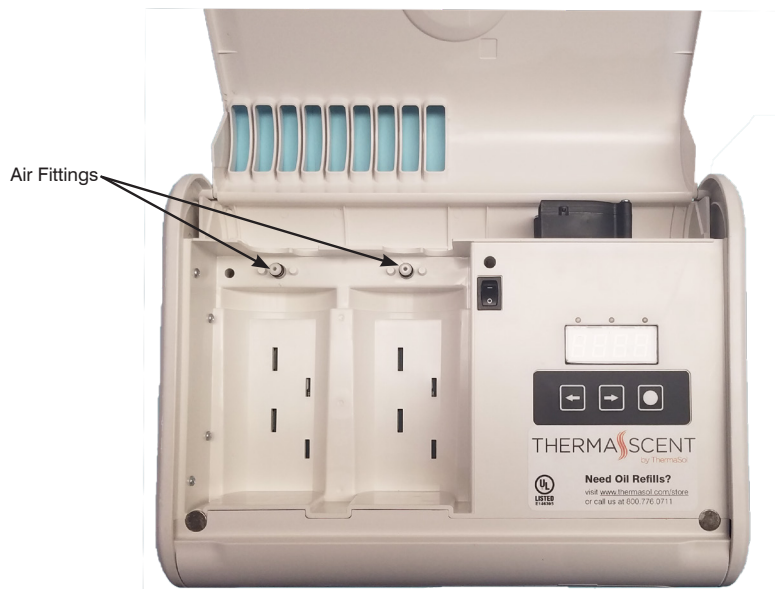


Image K

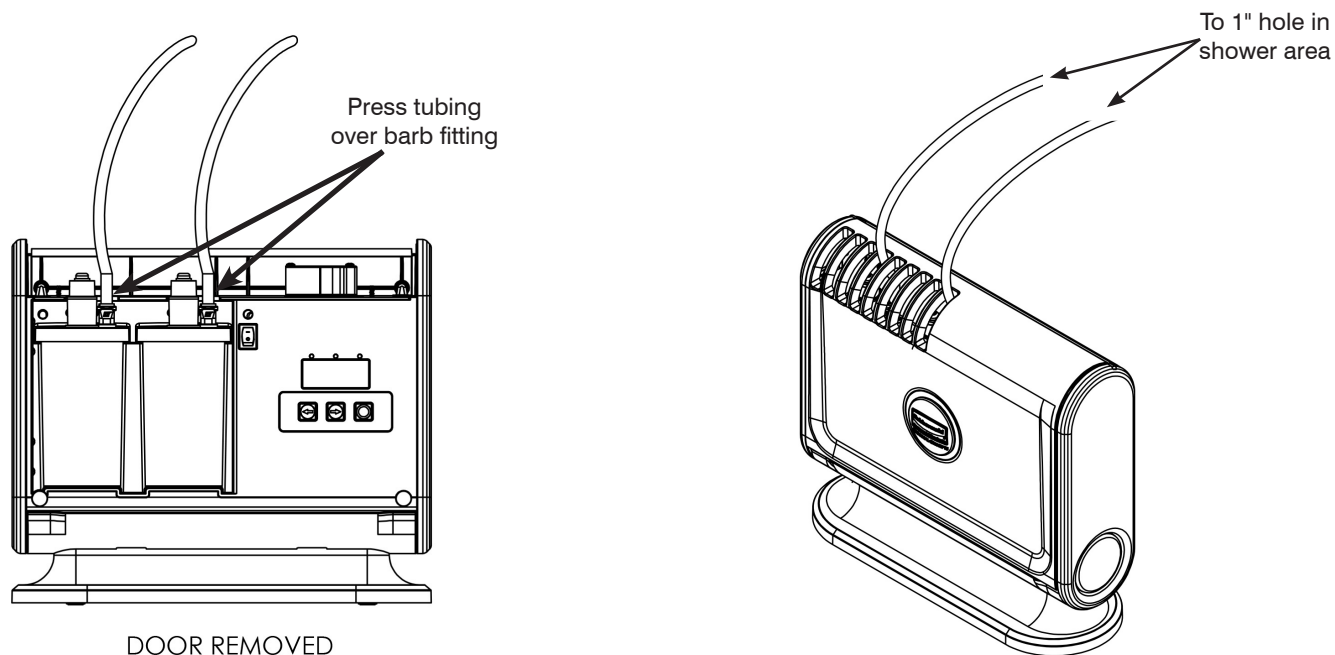


Image L

# 12 Installing Tubing

Now that the Lux Aroma is installed securely, fragrance cartridges have been installed, and the room dispenser installation prepared the tubing will be routed to connect the Lux Aroma to the room dispenser. With the cover of the Lux Aroma closed, attach one of the supplied tubing to the fragrance cartridge as shown below, run the tubing to the 1" hole that was drilled into the shower earlier in the instruction, be sure to allow 6" of slack at the shower hole to ease the dispenser assembly install, repeat this step for the second cartridge.

**IMPORTANT:** when running the tubing do not allow low spots, or pinch the tubing. This may cause the unit to not operate or operate poorly.

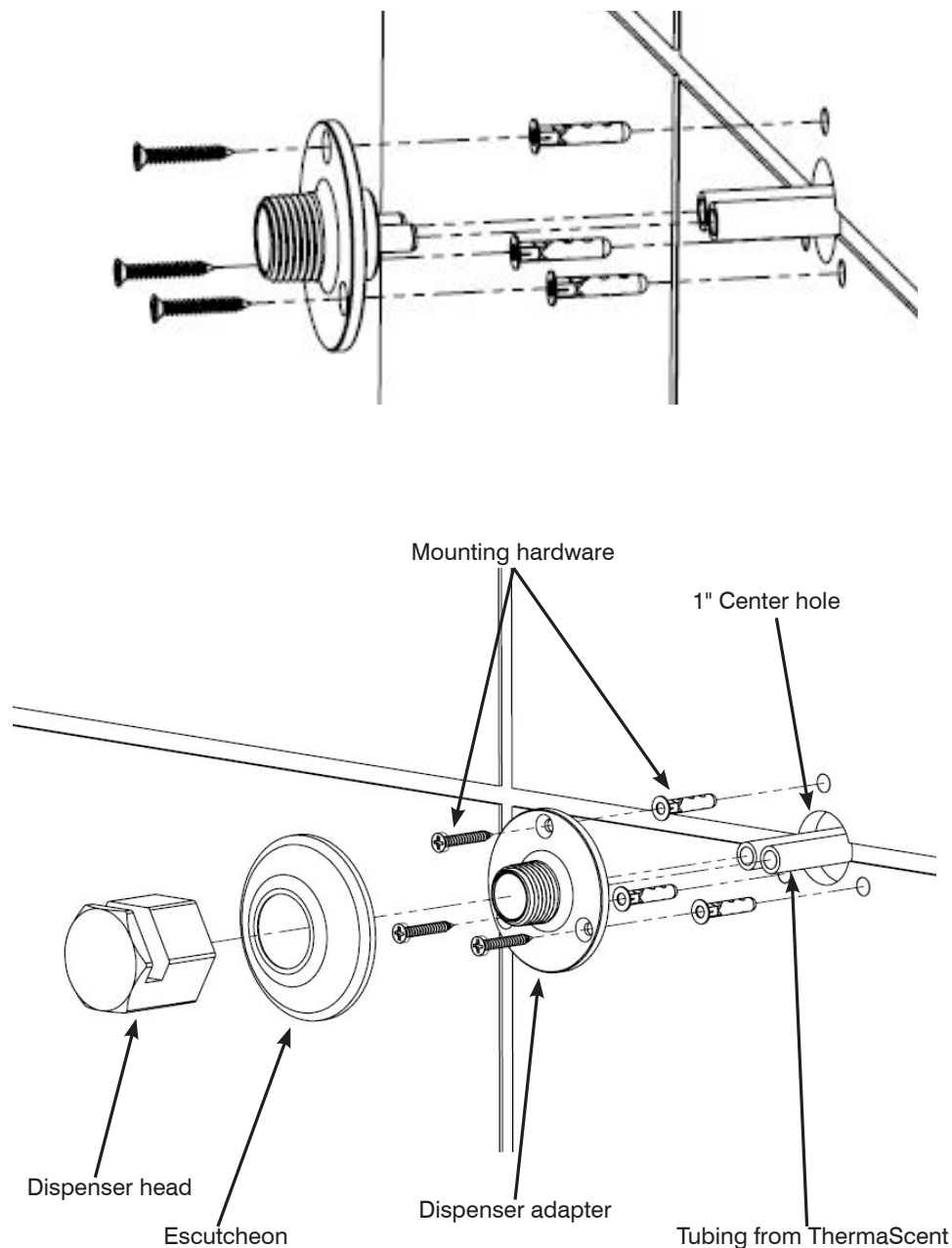


# 14 Finalizing the room dispenser installation

With necessary tubing routed and connected to the Lux Aroma System, we can finalize the room dispenser installation. Using the supplied anchors, silicone the holes then insert them into the three 1/4" holes. Attach the tubing to the barb fittings on the dispenser. Silicone the back of the adapter, align the 3 hole exactly as they were when you marked to drill them use the mark on the dispenser you indicated earlier to assist you.

Tighten the dispenser to the wall, clean up any residue silicon ensure all drill holes are sealed with silicone. Slip the escutcheon over the adapter, then tighten the dispenser head to the adapter.

Repeat these step if you are installing two rooms.



# 15

## Powering up the system

Now that the installation is completed, turn the power switch on inside the unit. The Lux Aroma display will light up. **Refer to the quick start guide for iOS or Android to program and operate your ThermaScent. enclosed in the shipment**

# THERMASOL®

Sauna & Steam



**KEMA**



1958 STEAM WAY ROUND ROCK, TX 78665  
PHONE: 800.776.0711 | FAX: 800.556.5257 | [WWW.THERMASOL.COM](http://WWW.THERMASOL.COM)

81189\_C 12/17