



## SHIPPING WEIGHT

**Weight** | 12 lbs.

**Length** | 13 in.

**Width** | 12 in.

**Height** | 9 in.

# THERMATOUCH CONTROL

TT7V2-BK

The ThermaTouch Control is a 7" LCD Touchscreen Control used to operate other ThermaSol modules such as Steam Room functions, Light, Sound and Tranquility Visualization. The control is approx. 8-4/5" Wide X 6 – 1/8" High X 3 – 1/2" Deep. It requires a wall cutout 7-1/2" Wide X 5-1/2" High and must have a clear in wall depth of 3-1/2".

## FEATURES

- Choose and download from a menu of popular Apps; shows, news, weather, video content, music and more
- Fully waterproof, ThermaTouch Plus can be installed anywhere: a shower, bathing area, patio, etc.
- Built-in Bluetooth® when paired with hydrovive
- Ethernet connection
- WiFi-enabled capabilities ensure that users automatically receive any updates to the software right to the controller, in-home after purchase.
- Powered by Android™
- Stereo audio output
- Alexa compatible
- Date and Time display
- Set steam time and temperature
- Set and control preferences for two users
- Operates: steam, digital shower, HydroVive light, sound and rain head.

## SPECIFICATIONS

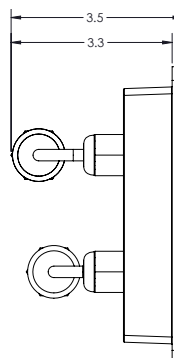
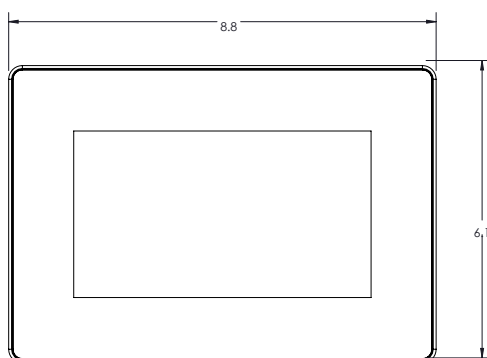
**Construction** | Acrylic

**Controllability** | Steam, Light & Sound, digital shower valve.

**Audio Out** | 3.5mm jack Connection

**Power Supply** | ThermaSol PDM (Included)

**Display** | 7" Wide LCD Touch Screen



## INSTALLATION NOTES

- Refer to ThermaSol installation Instructions Doc No. 81300 for complete instructions.
- Requires wall cut out opening of 7-1/2" Wide X 5-1/2" High X 3-1/2" Deep. See instruction: 81301
- Ensure 3-1/2" clearance around all sides of the mud ring cutout for controller clearance from walls or fixtures
- Use Mud Ring for Tile installation and ThermaTouch Control placement (PN: 04-8544).
- Ensure 3-1/2" clearance behind the rear of the control for cable clearance.
- The control should be installed 60 inches from the floor and as far away from the steam outlet as possible.
- Power Distribution Module (PDM) Included requires 110VAC power



#### SHIPPING WEIGHT

**Weight** | 10.65 lbs.

**Length** | 12 in.

**Width** | 16 in.

**Height** | 3.5 in.

## DIGITAL SHOWER VALVE

TDS-3000

With a minimalist look desired by top architects, ThermaSol's Digital Shower eliminates the need for exposed valves and trims. The integrated system reduces installation costs and allows the budget to be invested into building a state-of-the-art shower environment.

#### FEATURES

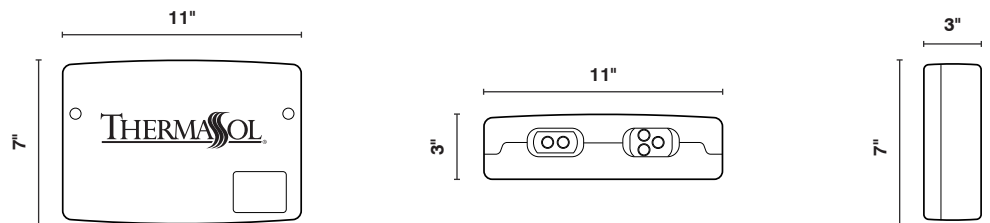
- Industry leading ceramic disc Flühs valves ensures reliability and safety
- Operates two industrial grade stepper motors with 400 positions that take away the noise factor found with solenoid valve systems and provides precise temperature control
- May be installed up to 30 ft. away from shower
- Three output valve - Example: Rainhead, Hand Shower and Standard Showerhead
- Battery backup included
- Output 9.25 GPM at 45 PSI
- IAPMO Approved

#### SPECIFICATIONS

**Two Inputs** | 1/2" FNPT

**Three Outputs** | 1/2" FNPT

**Power Supply** | Input 110VAC .5 AMP Output 15VDC, 3 AMPS Required



#### INSTALLATION NOTES

- Refer to ThermaSol installation Instructions Doc No. 81216 for complete instructions.
- Digital Shower Valve must be accessible do not seal into walls.



**SQUARE**



**ROUND**

## SPECIFICATIONS – Light and Sound Rain System

Construction.....6061 Billet Aluminum  
Controllability..... Signature, ThermaTouch, Signatouch  
Function Lights.....18 High Power LED lights  
Rainhead Water Supply..... 3/8", 40-80 PSI, 1.8GPM  
CEC Approved

### Lighting

- 18 special high intensity LED Lights (R,G,B)
- Full color spectrum- All on = white light
- Color Changing "Mood Lighting"
- Preset Chroma Therapy Chakras
- Custom user programmable "any color"
- Voice Response Feedback

### Audio

- Multi-Channel Hi-Power Mosfet Amplifier
- Built-in Subwoofer
- High-frequency Tweeters
- Voice Response Feedback
- Bluetooth module
- RCA audio input

### Installation Notes:

Overall size is 10.0" SQ or Dia (if round) X 7.5" Tall X 5.5" Wide, and requires approx. 7.00" X 5.75" cutout in the shower ceiling. The unit is self-contained as one piece and extends into the ceiling space 7.0" plus plumbing connection clearance. Use a 3/8" compression fitting and a flexible potable waterline to connect to the Rainhead. Use only potable water and approved plumbing fittings for any shower connection. Refer to ThermaSol Installation Instructions for a full-sized template and detailed installation and operation instructions.

### Finish Chart:

Select desired finish and replace XX with code.

PC = Polished Chrome  
SC = Satin Chrome  
PB = Polished Brass  
SB = Satin Brass  
AB = Antique Brass  
COP = Polished Copper  
ACOP = Antique Copper

PN = Polished Nickel  
SN = Satin Nickel  
BN = Black Nickel  
MB = Matte Black  
AN = Antique Nickel  
PG = Polished Gold  
ORB = Oil Rubbed Bronze  
WHT = White

### Product Specification:

A self-contained, Light and Sound Rainhead module that creates high-intensity chromatherapy lights and sounds. Rainhead is rated at 1.8 GPM Max. at 80 PSI and requires a separate diverter port with shut off valve. Powered by: provided 24V DC, 30 Watts power supply.

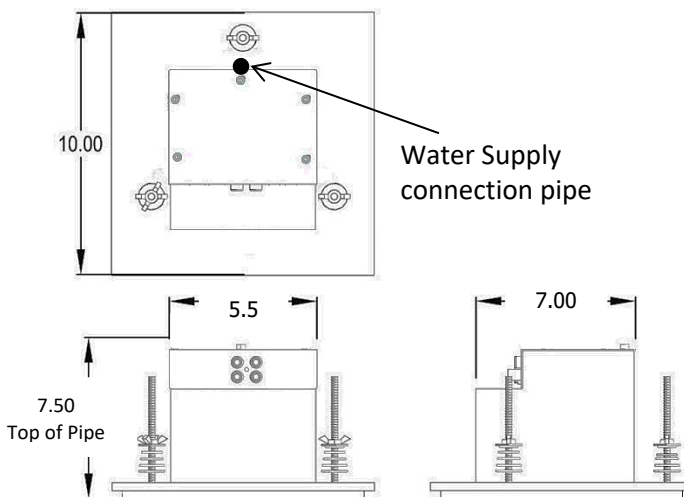
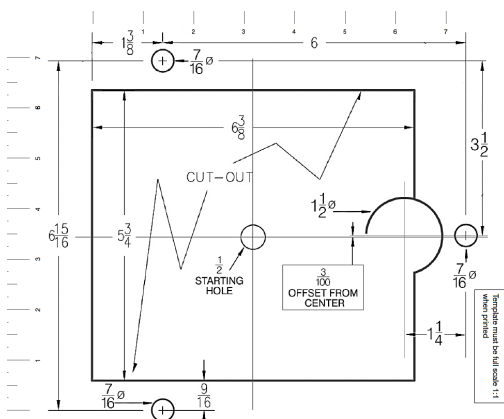
### Shipping Information:

Weight.....13 lbs.  
Length.....15 in.  
Width.....15 in.  
Height.....14 in.

For any further assistance please contact ThermaSol at

800.776.0711 or [sales@thermasol.com](mailto:sales@thermasol.com)

Visit [www.thermasol.com](http://www.thermasol.com) for a complete product definition





## SPECIFICATIONS – SteamVection Steam Head

Construction..... Brass  
Aromatherapy..... Integral Reservoir

### Installation Notes:

The steam head should be installed 24 inches from the floor, and 6 inches from any corner, inside the shower only, and as far away from the controller and shower fixtures as possible.

The steam head housing requires a 1-1/8" hole in the shower wall, and must be flush with the finished wall and sealed to the wall to not allow vapor or water behind it. Use 1/2" copper fittings to attach the housing to the steam outlet. See the full steam head housing instructions within your generator installation guide.

### Product Specification:

The steam head shall be approximately 1.75" x 1.75" in the square version, and a 1.75" Dia. For the round version. The steam head is made from brass alloy and includes an aromatherapy well.

### Finish Chart:

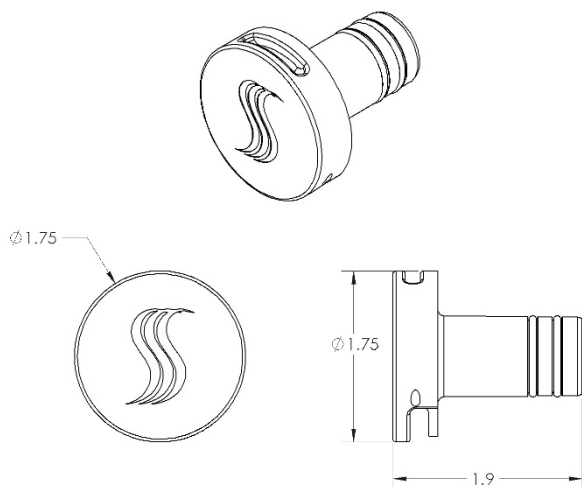
Select desired finish and replace XX with code. No-Touch Aromatherapy steam head and control finishes.

|                       |                         |
|-----------------------|-------------------------|
| PC = Polished Chrome  | PN = Polished Nickel    |
| SC = Satin Chrome     | SN = Satin Nickel       |
| PB = Polished Brass   | BN = Black Nickel       |
| SB = Satin Brass      | AN = Antique Nickel     |
| AB = Antique Brass    | PG = Polished Gold      |
| COP = Polished Copper | ORB = Oil Rubbed Bronze |
| ACOP = Antique Copper | WHT = White             |
| MB = Matte Black      |                         |

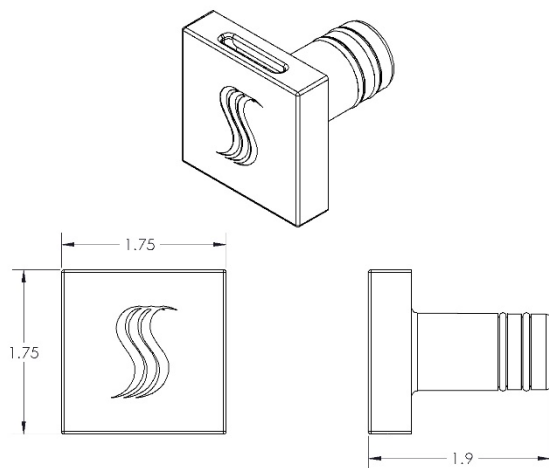
### Shipping Information:

Weight..... 1 lbs.  
Length.....9.5 in.  
Width.....3.5 in.  
Height.....2.5 in.

For any further assistance please contact  
ThermaSol at 800.776.0711 or  
[sales@thermasol.com](mailto:sales@thermasol.com)



Round Style



Square Style