

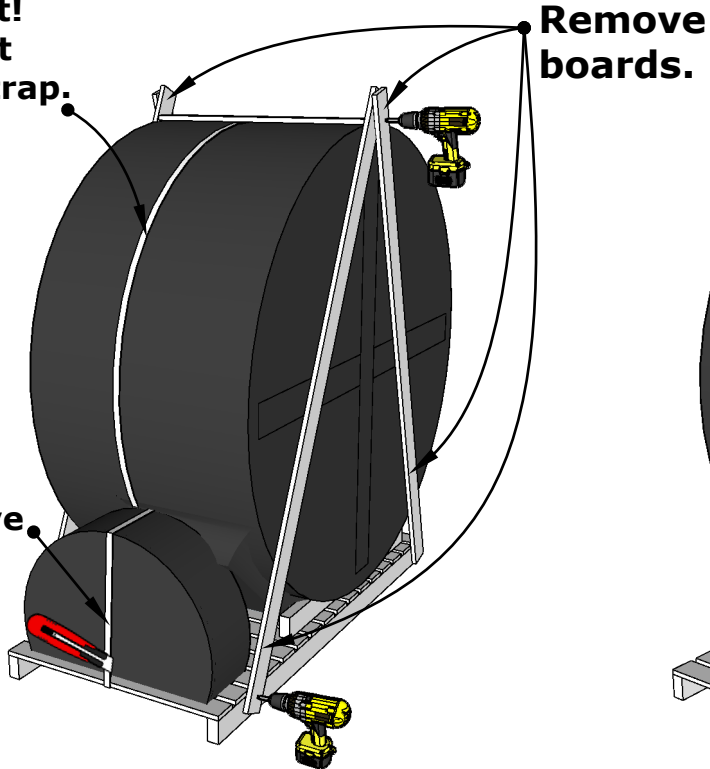
## Model S6N Wood-Fired Hot Tub Quick Guide

Serial No \_\_\_\_\_

**I**

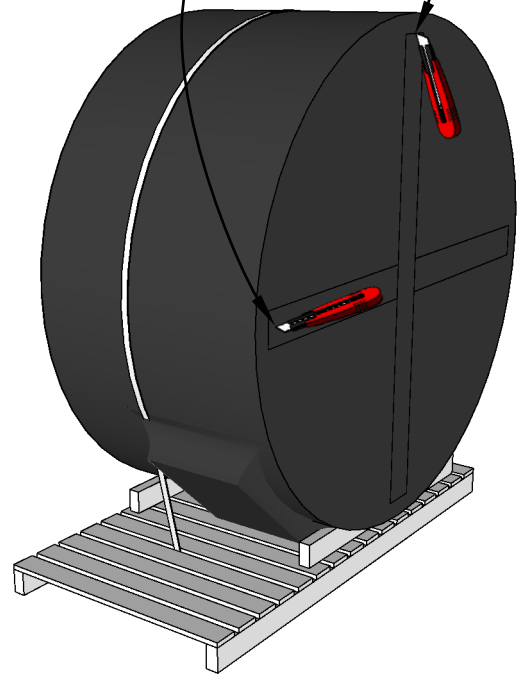
**Important!  
Do not cut  
hot tub strap.**

**Cut strap  
and remove  
steps.**

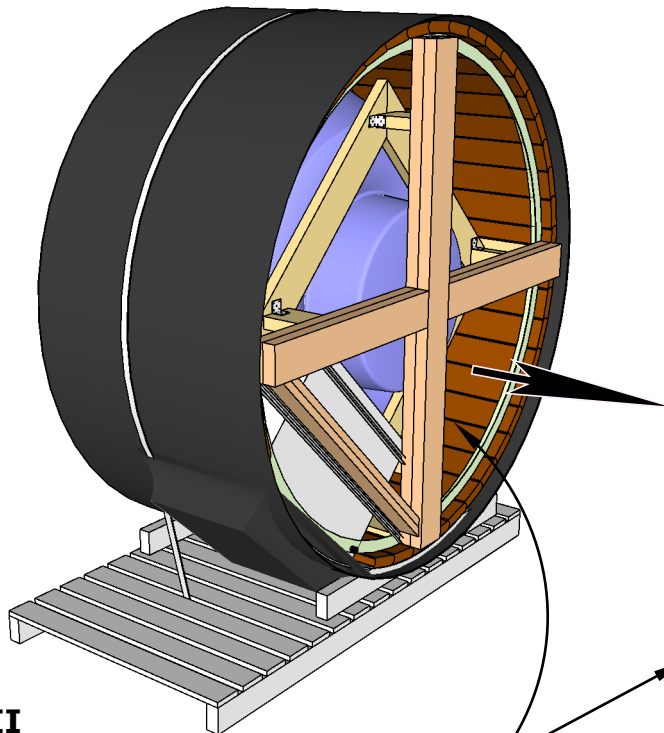


**II**

**Cut  
bottom  
plastic.**



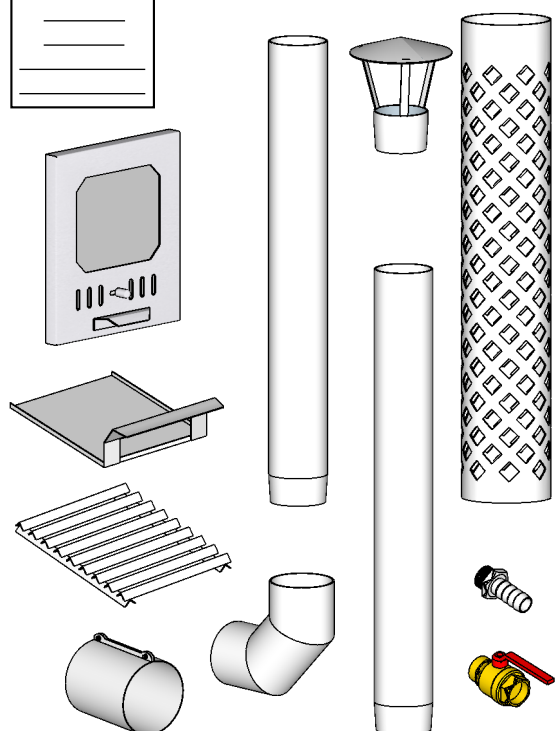
**III**

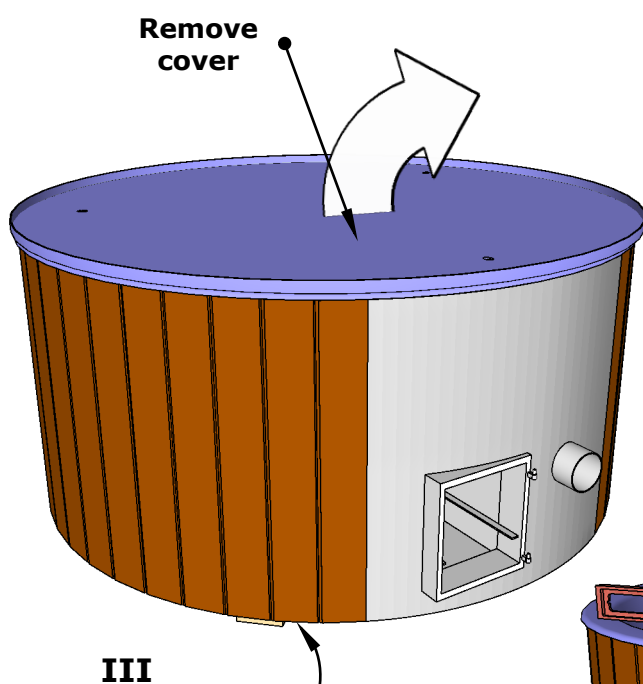
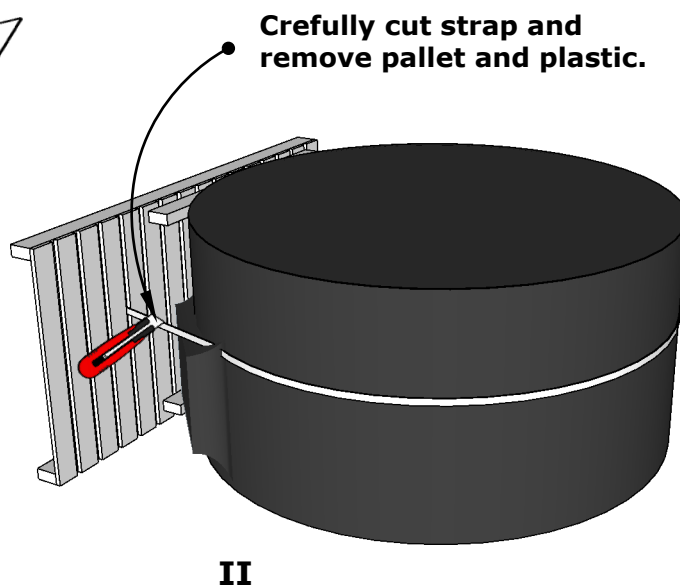
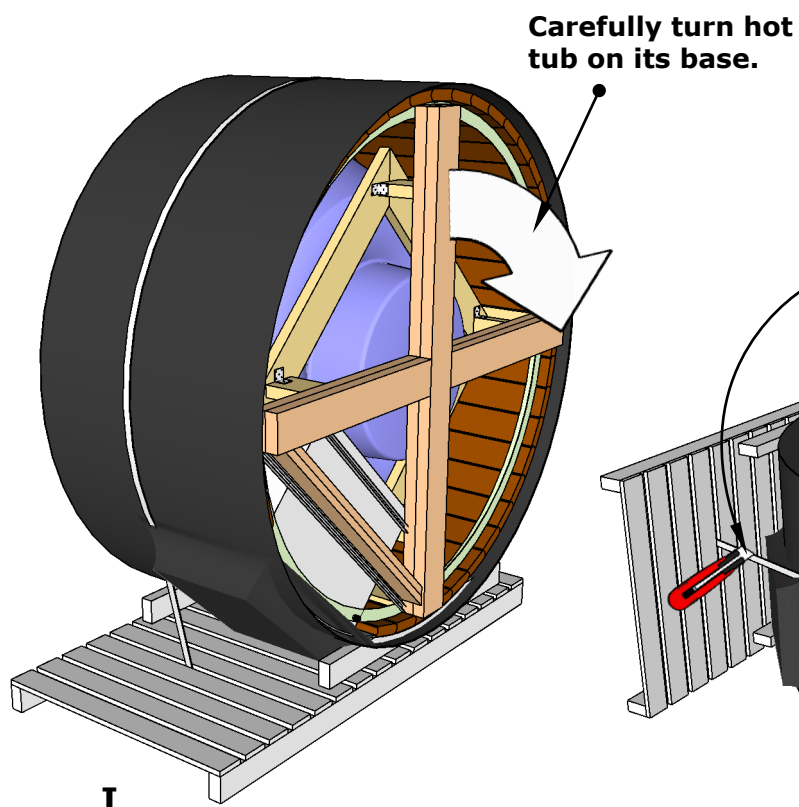


**Compare  
contents with  
parts diagram.**

Installation  
Manual

**Please read manual  
before continuing.**

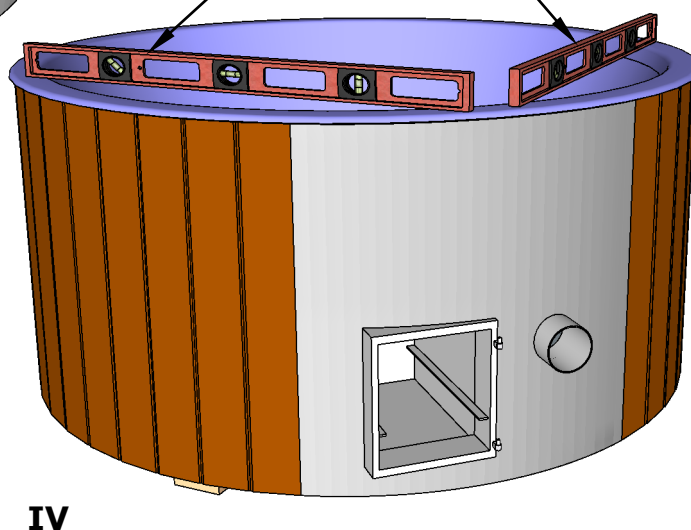


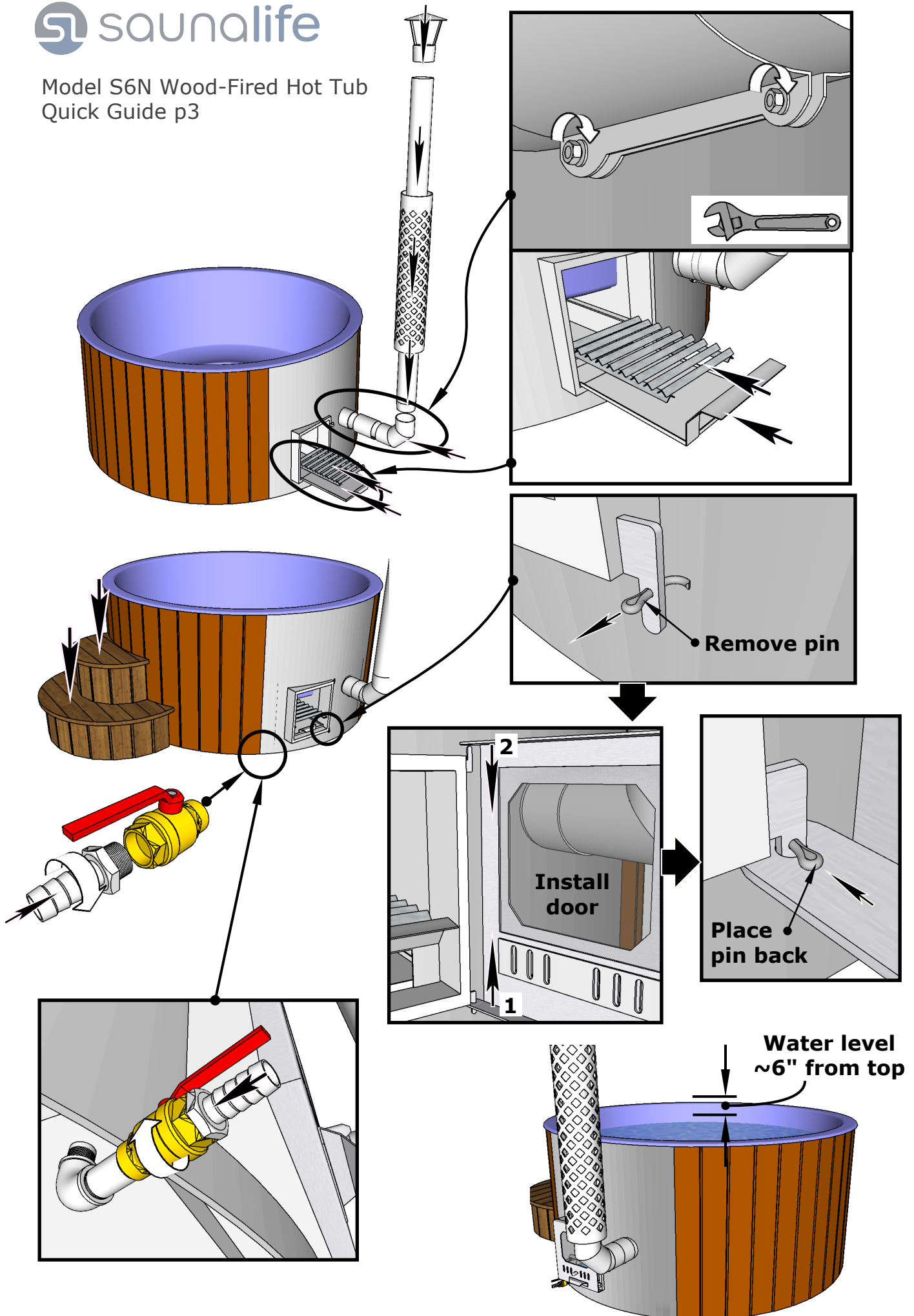


Use liquid level.



Level Hot tub





## S6 Wood-Fired Hot Tub Safety Instructions

When using the hot tub it is very important to follow local safety regulations, in order to avoid any risks to human health or property. The instructions below are common – sense recommendations to prevent any immediate dangers.

**! Firing of the hot tub's stove may begin only after the hot tub has been filled with water.**

**! This hot tub is a product that includes a hearth. Please be careful when firing the stove.**

**! Condensate water may occur under the stove during heating the hot tub. If necessary, we recommend to place a container under the stove to collect the condensate water.**

- For fire safety purposes, place the hot tub at a distance of at least 13 feet from any building.
- Never leave the hot tub's stove unattended while heating.
- While the stove is being fired, the chimney and the stove are hot and may cause burns when touched.
- For safety and to prevent damage to the hot tub, do not exceed the recommended capacity users.
- When firing the stove, heat the water in the hot tub to a recommended maximum of 105°F.
- Never jump into the hot tub.
- Do not leave children unsupervised in the hot tub.
- **The use of chlorine-containing detergents to wash the hot tub is prohibited.**
- Never use abrasive cleaning agents to clean the hot tub.

### Heating the hot tub

**! Do not begin heating the hot tub until after it has been filled with water!**

**! Do not drain water from the tub until after the embers in the stove are completely extinguished!**

- Before filling the hot tub with water make sure that the drain valve of the hot tub is closed.
- Fill the hot tub to a level where the water is approximately 4" over the section above the stove.
- Using only dry wood to fuel the hot tub's stove. Carbon can not be used. Use a pellet fuel starter or lighter fluid to facilitate starting a fire.
- To heat water faster, it is advisable to cover the hot tub with a lid.
- It is recommended to heat the water in the hot tub to a maximum of 105°F.
- Any ash particles accidentally released into the water when heating the hot tub may be removed using an ordinary kitchen sieve.
- Do not use paper to light firewood, as this can cause excessive airborne spark and embers.
- Firewood should be no longer than 13".

### Hot Tub Maintenance

Cleaning and maintaining the hot tub regularly is important for both hygiene and the long-term preservation of the hot tub. Treat the wood parts of hot tub (walls, stair) with wooden oil appropriate for exterior use at least once yearly.

**IMPORTANT! In winter, always drain the water from the tub and stove after use to prevent freezing of water in the tub or its pipes. Water freezing may cause the hot tub or stove to break! The drain valve must also be left open to avoid the risk of the valve freezing and breaking!**

- After emptying the hot tub with a bubble system, turn on the bubble system for a few minutes to allow the moisture in the system to drain.

**IMPORTANT! The instructions below are recommendations for users of the hot tub.**

- Wash the hot tub after each use.
- Shower before using the hot tub, to ensure better hygiene in the water.
- The hot tub may be washed with a pressure washer with regular household detergents and a soft cloth.
- No hard material or material with a rough surface or chlorine solutions should be used to clean the hot tub (will cause discolouration).

A guarantee for a private customer is valid for 2 years. A product used for commercial purposes has a 6-month warranty.

**SERIAL NUMBER:** \_\_\_\_\_

When submitting a complaint, it must be accompanied by one or more photos, a description of the deficiency, the order number and the serial number required to identify the product.